



PARAMOUNT PETALS

Lovable Living

WINNER OF 10 PROPERTYGURU AWARDS 2024



PARAMOUNT LAND
Building homes and people with heart



**PARAMOUNT
PETALS**
Lovable Living



**BEST TOWNSHIP DEVELOPER
PARAMOUNT LAND**

**BEST TOWNSHIP MASTERPLAN DESIGN
PARAMOUNT PETALS**





**PARAMOUNT
PETALS**

Lovable Living

Incomparable Grand Masterplan ±400 HA

Grand Masterplan ±400 HA



PARAMOUNT PETALS

Lovable Living

A new township with direct toll access KM 25,
Jakarta - Merak Toll

To Merak

Jakarta - Merak Toll

To Jakarta

To Cikupa

North
Paramount
Petals

West
Paramount
Petals

Jl. Raya Curug

South
Paramount
Petals

North





PARAMOUNT PETALS

Lovable Living

West
Paramount
Petals

To Cikupa

To Merak

Jl. Raya Curug

North
Paramount
Petals

Toll
Gate

Existing Toll Gate
Bitung KM 26

Jakarta - Merak Toll

Direct Toll Access KM 25,
Paramount Petals

To Jakarta

Future Facilities in North Paramount Petals

- Hotel
- Bethesda Hospital
- School & University
- Mall
- Bezwalk

North



West
Paramount
Petals



Community
Club



Pasar
Modern



South
Paramount
Petals



Estate
Management



South
Junction

South
Gate



Marketing
Gallery





PARAMOUNT PETALS

Lovable Living

Sudah dibangun >1000 unit
Sudah diserahterimakan >600 unit
Sudah dihuni >400 unit

To Merak

To Cikupa

West
Paramount
Petals

South
Paramount
Petals

North
Paramount
Petals

Jl. Raya Curug

Jakarta - Merak Toll

To Jakarta

North



Akses Baru Paramount Petals



South Junction

Opening 5 December 2024



Community Club

Pasar Modern
Paramount Petals

South
Junction

South
Gate



Fasilitas Kota di tahun 2024



Community Club



Opening 5 December 2024



Community Club

**Pasar Modern
Paramount Petals**

**South
Junction**

**South
Gate**



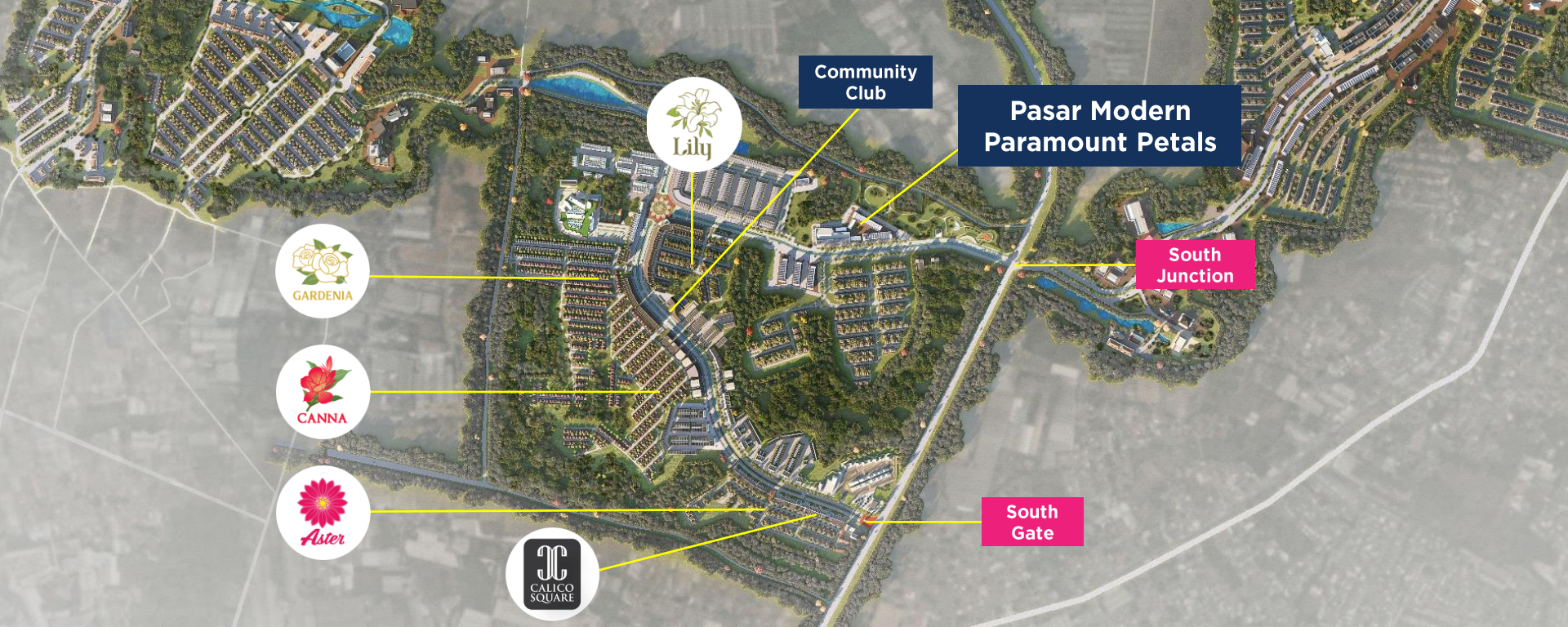
Fasilitas Kota di tahun 2024



**Pasar Modern
Paramount Petals**



Groundbreaking 5 December 2024



Community Club

Pasar Modern
Paramount Petals

South Junction

South Gate



Fasilitas Kota di tahun 2025

Bethsaida Hospital



Groundbreaking 2025

Paramount Petals Commercial & Tenants



PARAMOUNT
PETALS
Usaha Living

In Operation:



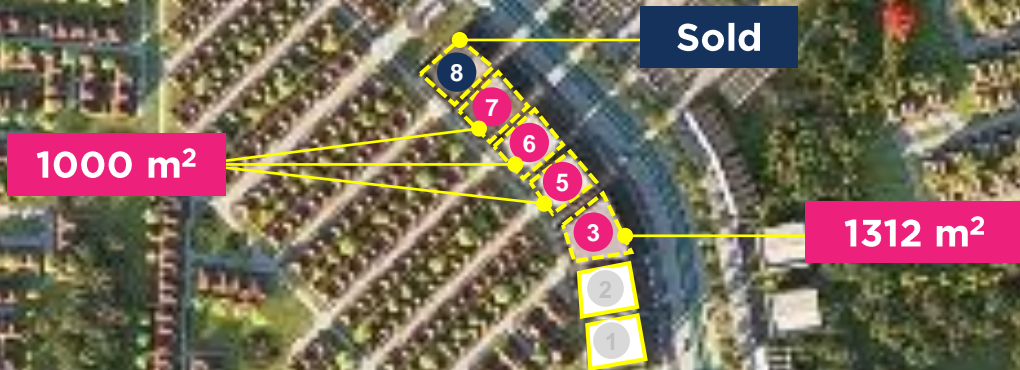
Opening Soon



Commercial Product in Paramount Petals



PARAMOUNT
PETALS
Liveable Living



Commercial Area in Paramount Petals





The First Alfresco Commercial in Paramount Petals



*West
Paramount
Petals*

*South
Paramount
Petals*

UTARA





West
Paramount
Petals

South
Paramount
Petals

UTARA



South Gate to
Calico Grande
0,25 Km Distance



West
Paramount
Petals

South
Paramount
Petals

UTARA



Calico Grande to
South Junction
1,65 Km Distance



Toll Gate

To Merak

JAKARTA - MERAK TOLL

To Jakarta

To Cikupa

North
Paramount
Petals



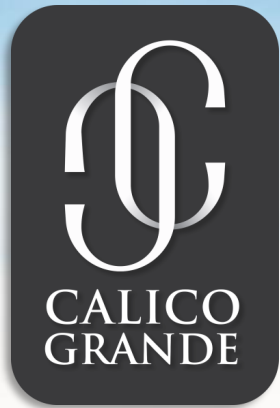
West
Paramount
Petals

UTARA



South
Paramount
Petals

Calico Grande to
Direct Toll Access





**CALICO
GRANDE**

Modern Façade Design

Layout Options (Alfresco & Regular)

Gateless & Multi Access

Located at Main Boulevard

Modern Façade Design



Layout Options



Alfresco Type



Regular Type

Alfresco Dinning Concept



Konsep Alfresco



Tipe Alfresco

Gateless & Multi Access

South Gate

Marketing Gallery



Located at
Main Boulevard



Siteplan

4 x 18 - Tipe Alfresco

4 x 17 - Tipe Alfresco

4 x 12 - Tipe Regular

North



Future Development



CALICO
GRANDE

- | | |
|-----------------|--------------|
| Titik PJU | Show unit |
| Panel SKTR* | Turap aktual |
| Penangkal petir | Batas area |



Denah



CALICO
GRANDE

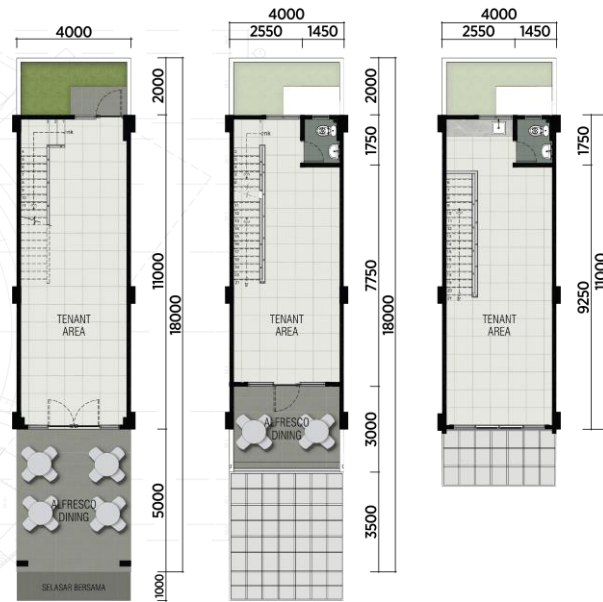
Tipe Alfresco

4 x 18

3 lantai

LT : 72 m²

LB : 150 m²



Lantai 1

Lantai 2

Lantai 3

Denah



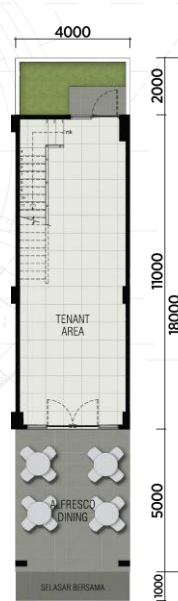
Tipe Alfresco

4 x 18

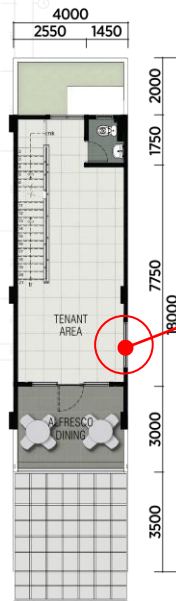
Sudut - 3 lantai

LT : 72 m²

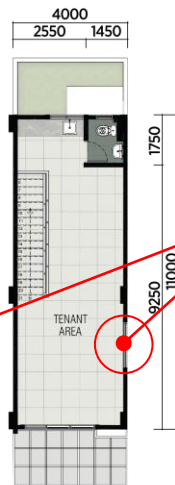
LB : 150 m²



Lantai 1

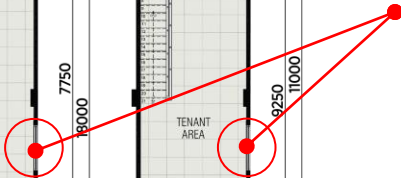


Lantai 2



Lantai 3

Jendela samping



Denah



CALICO
GRANDE

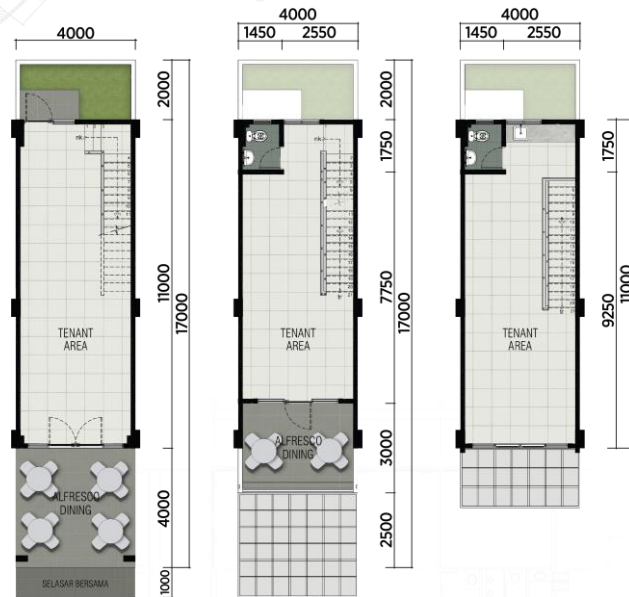
Tipe Alfresco

4 x 17

3 lantai

LT : 68 m²

LB : 148 m²



Lantai 1

Lantai 2

Lantai 3

Denah



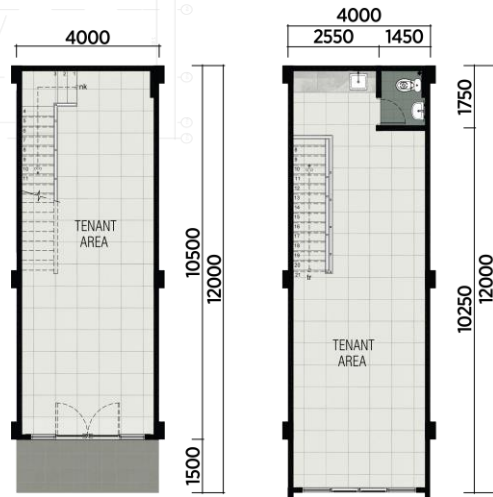
Tipe Regular

4 x 12

2 lantai

LT : 48 m²

LB : 96 m²



Lantai 1

Lantai 2

Section



Tipe Alfresco

3 lantai



5 m 1 m 5 m 11 m 2 m

Sirkulasi kendaraan Parkir mobil Selasar bersama Teras Alfresco Bangunan ruko lantai satu

3,6 m
3,6 m
4 m

Tipe Regular

2 lantai



5 m 1.5 m 10.5 m

Sirkulasi kendaraan Parkir mobil Teras Bangunan ruko lantai satu

3,6 m
4 m

Spesifikasi:

Pondasi : Tiang Pancang (mini pile) | Struktur Kolom, Balok, Dak, Sloof, Ring Balok, Tangga : Beton Bertulang | Rangka Atap : Rangka Baja Ringan (Zincalume) | Penutup Atap : Atap Metal (Zincalume) + Aluminium Foil | Lantai Utama : Homogeneous Tile 60x60 | Lantai Teras : Ceramic Tile 40x40 anti slip | Lantai KM/WC : Ceramic Tile 30x30 anti slip | Dinding KM/WC : Ceramic Tile 30x60 | Dinding Dalam : Bata Ringan diplester + aci, finish cat emulsion | **Dinding Façade Luar : Bata ringan diplester + aci, finish Cat Weather Resistant Emulsion Paint & Aluminium Composite Panel** | Plafond Dalam : Gypsumboard | Plafond Luar dan KM/WC : Gypsum water resistant | **Sanitary : ex. Toto/setara** | Pintu/Jendela Utama : Kaca Clear Frame Aluminium fin powder Coating | Pintu/Jendela Lainnya : Kaca Clear Frame Aluminium fin powder Coating | Pintu KM/WC : Panel dan kusen PVC | **Railing Balkon : Besi Hollow + Kaca tempered** | Railing Tangga : Besi Hollow | Canopy Teras Alfresco : Rangka Baja Hollow + Solar Flat | Canopy Balkon : Rangka Baja Hollow + Solar Flat | Instalasi Listrik : Ruko 3 Lantai Suplai PLN Daya 5500 VA, Ruko 2 Lantai Suplai PLN Daya 3500 VA, | Telepon : Instalasi Kabel | Air Bersih : Suplai Perumdam + Toren | Air Kotor : Septictank

Digital Information Center

E-Brochure, E-Flyer, Video





**PARAMOUNT
PETALS**
Lovable Living

THANK YOU